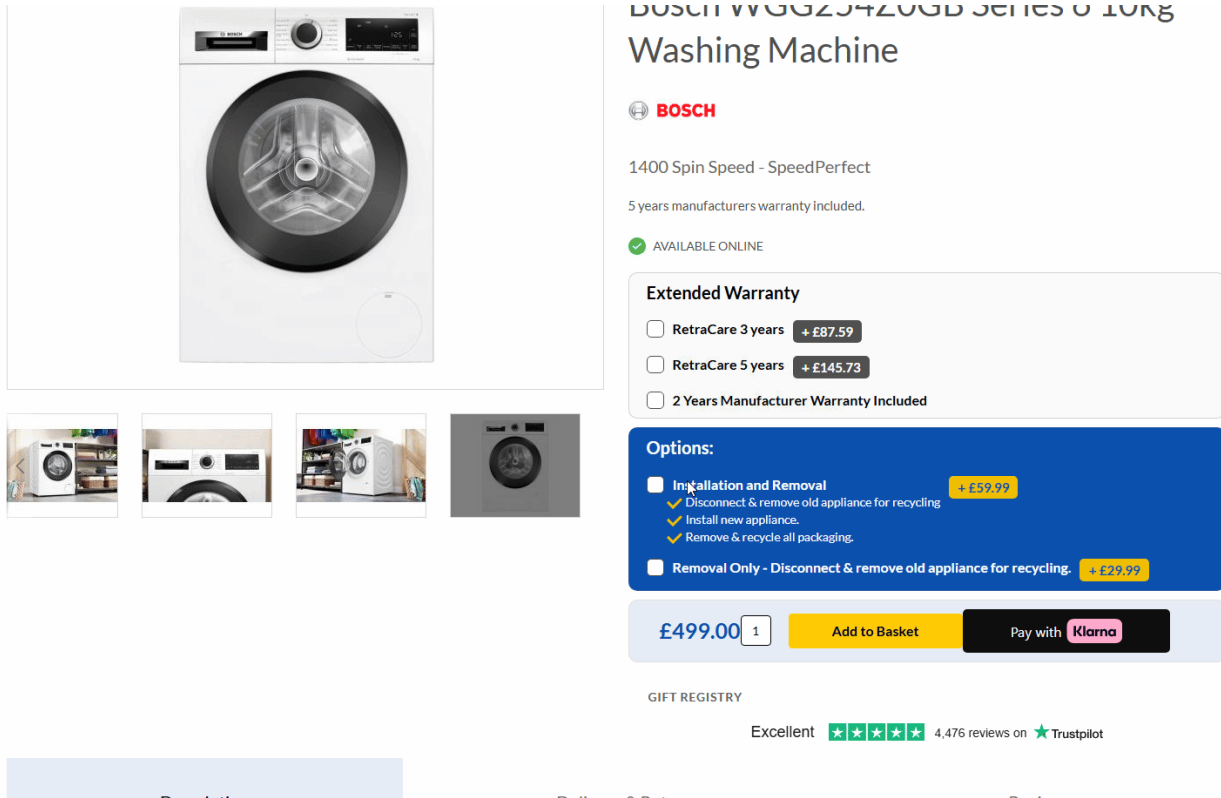


# Managing "Options" on Product Pages in NCompass



BOSCH WGG29420GB SERIES 6 10KG Washing Machine

**BOSCH**

1400 Spin Speed - SpeedPerfect  
5 years manufacturers warranty included.

✓ AVAILABLE ONLINE

**Extended Warranty**

- RetraCare 3 years + £87.59
- RetraCare 5 years + £145.73
- 2 Years Manufacturer Warranty Included

**Options:**

- Installation and Removal + £59.99
  - ✓ Disconnect & remove old appliance for recycling
  - ✓ Install new appliance.
  - ✓ Remove & recycle all packaging.
- Removal Only - Disconnect & remove old appliance for recycling. + £29.99

£499.00  [Add to Basket](#) [Pay with Klarna](#)

GIFT REGISTRY

Excellent ★★★★★ 4,476 reviews on ★ Trustpilot

This section explains how to manage the **Options** that appear on your product pages from within NCompass, specifically for associating services with your categories.

## 1. Prerequisites: Setting Up Service Products

Before you can associate services with categories, ensure the following requirements are met:

### 1. Product Exists in NCompass

- The service must be set up as a **Non Controlled item** in NCompass.
- These are typically found under the **"Service Products"** department in your system.

### 2. Web Price Set

- A web price must be entered in the Retail Pricing window within NCompass.

### 3. Product Title Configured

- In **Product Info**, under the **Web / Multi-channel Settings** section, ensure the **Product Title** is set.

△ **Important:** If any of these requirements are not met, the service options will not appear correctly on your product pages.

---

## 2. Associating Services to Categories

Once the service products meet the requirements above, you can associate them with your categories.

### How category associations work:

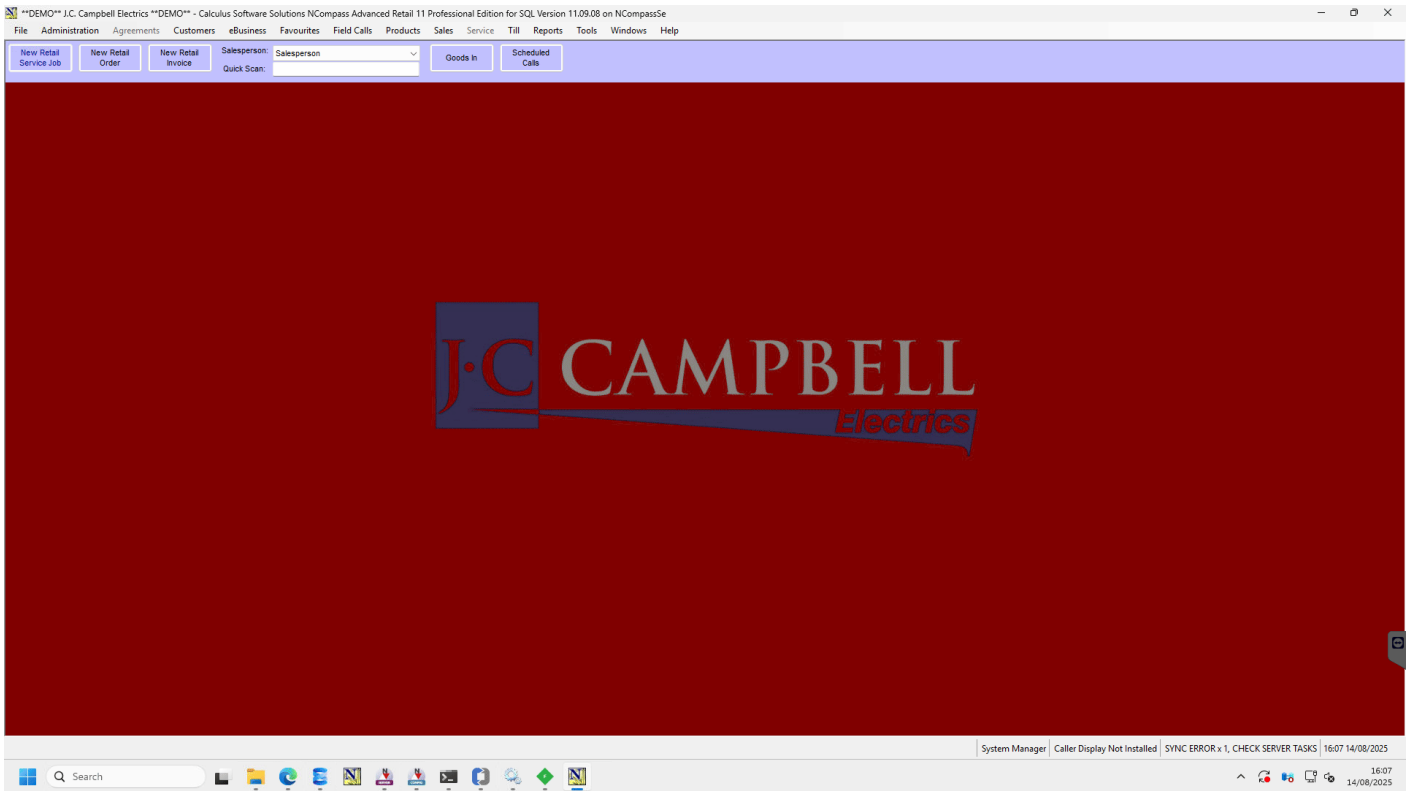
- Associations operate on a **hierarchical basis**.
- If you assign a service at a **department level**, it will cascade down to all products in subcategories.
- These must be set as "Web: Checkout Options" in **Part 2**.

### Examples:

- Assigning a "**Remove/Recycle**" charge to the **Laundry** category will automatically apply it to all subcategories such as **Washing Machines, Washer Dryers, and Tumble Dryers**.
  - For services that differ between product types (e.g., installation fees for **Freestanding** vs. **Integrated** appliances), set them at the **lowest relevant category level** to ensure they only apply to the correct products.
- 

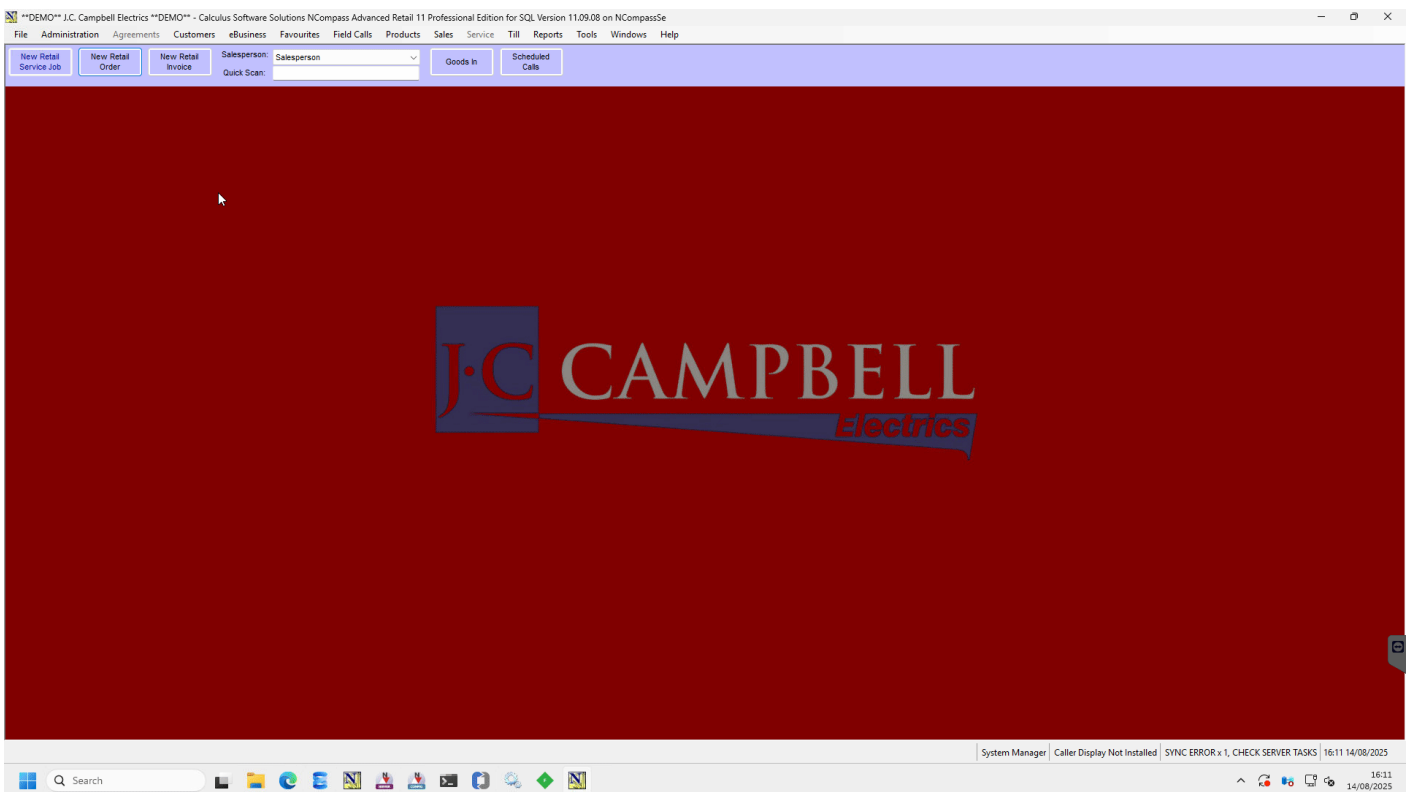
## 3. Demonstrations

- **Part 1: Setting up a Service Product in NCompass.**
  - This covers locating an existing service item
  - checking the financial information on the product (Existing web pricing)
  - locating the web information and setting the "**Product Title**" accordingly



- **Part 2:** Associating that service product (charge) to the correct category or subcategory.

- This Shows you how to associate the services to your departments
- ensuring you you've applied all checks in Part 1 for your service, add the associated charge as a "Web: Checkout Option".



Created 2025-08-14 14:45:04 UTC by Jordan Lane  
Updated 2025-08-14 15:14:49 UTC by Jordan Lane