

Setting up Google API for Routing and Mapping

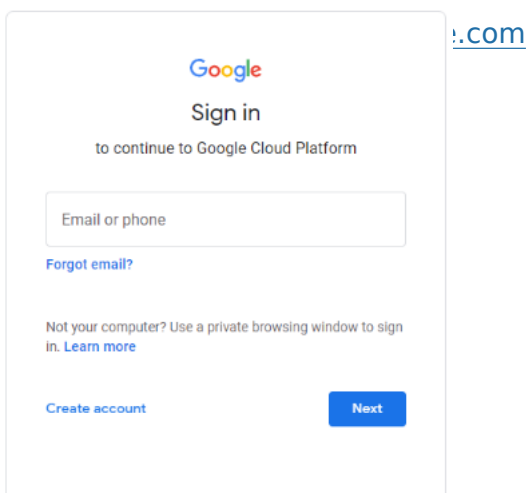
Introduction

These instructions are designed to guide customers through obtaining a Google API Key, which is then used through NCompass to use the mapping feature.

Adding Google API's to Google Account

Create User / Sign In

Open an internet browser on your computer and go to the following URL:

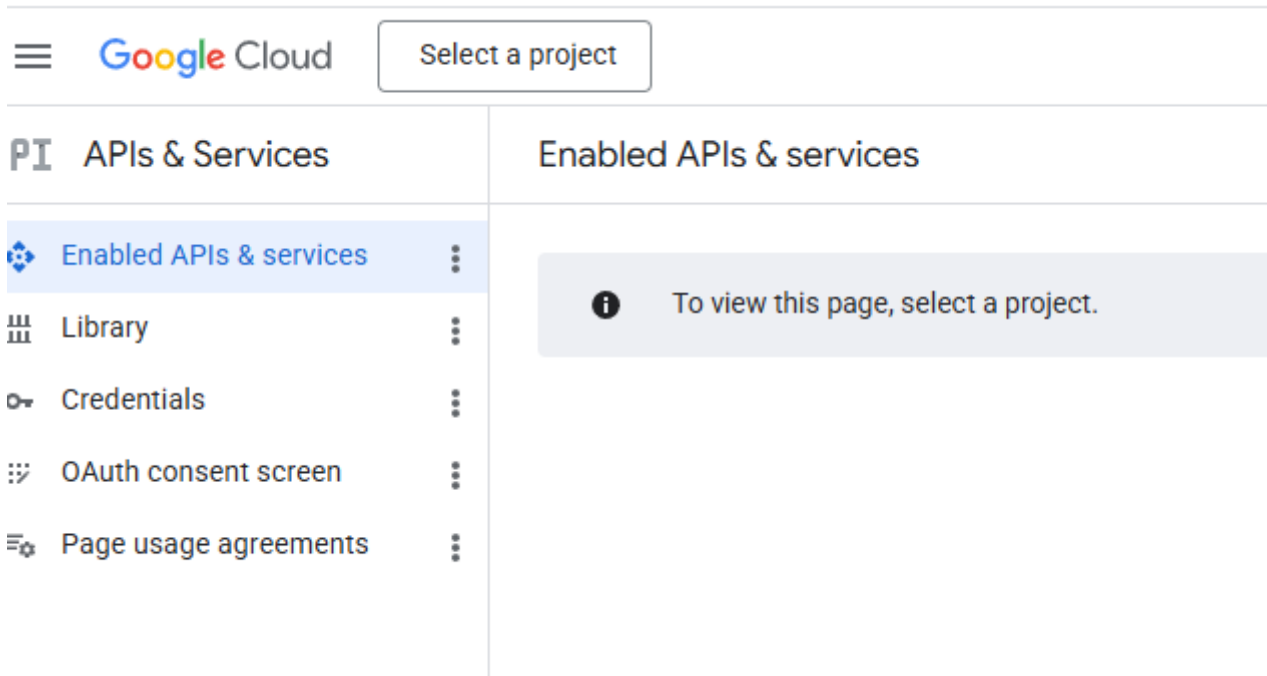


The screenshot shows the Google sign-in page for Google Cloud Platform. It features the Google logo at the top, followed by the text "Sign in to continue to Google Cloud Platform". Below this is a text input field labeled "Email or phone". To the left of the input field is a link "Forgot email?". Below the input field is a note: "Not your computer? Use a private browsing window to sign in. [Learn more](#)". At the bottom left is a link "Create account" and at the bottom right is a blue button labeled "Next".

If you already have a Google Account enter your email address and click Next. Alternatively click the Create account option to create a new account.

Create Project

When you have created an account / logged into the Google Developers Console, click on Select a project at the top of the screen.



Click on New Project (at the top right). You are required to create a new project before you can use the Google APIs. Set the project name as 'Route Mapping' or something similar. Click on Create. Your web browser will now redirect to the Enabled API's & services page.

Enable API's

On the Enabled API's & services, you will see a list of API's available down the screen. If you don't see this, press Enabled API's & services on the left hand side of the screen

Google Cloud Route Mapping Search (/) for resources, docs, products, and more Search

APIs & Services + Enable APIs and services

Enabled APIs & services Library Credentials OAuth consent screen Page usage agreements

Traffic Errors Median latency

No data is available for the selected time frame.

UTC+1 6:00 PM Apr 14 6:00 AM 12:00 PM

Filter Filter

Name	Requests	Errors (%)	Latency, median (ms)	Latency, 95% (ms)
Analytics Hub API				
BigQuery API				
BigQuery Connection API				
BigQuery Data Policy API				
BigQuery Data Transfer API				
BigQuery Migration API				
BigQuery Reservation API				
BigQuery Storage API				
Cloud Dataplex API				
Cloud Datastore API				
Cloud Logging API				
Cloud Monitoring API				

At the top of the screen, press the + Enable APIs and services (or you can press the Library button on the far left) and use the search box to enable the following APIs:

- Maps Static API
- Directions API
- Maps JavaScript API
- Geocoding API

Search for Maps Static API and press the Maps Static API button, then on the next screen, press enable

API Library "maps static api" Search maps static api X


API Library > "maps static api"

Filter Type to filter

Visibility Public (2)


Category Maps (2) Google Enterprise APIs (2)

2 results



Maps Static API
Google Enterprise API ?

Simple, embeddable map image with minimal code.



Street View Static API
Google Enterprise API ?

Real-world imagery and panoramas.

After pressing Enable, it will ask for account information. The first page is to confirm the country from a dropdown list. Once selected, press Agree & continue.

The second page will ask for contact information and a payment method. Put your company address, save and then add your preferred payment method e.g. credit / debit card

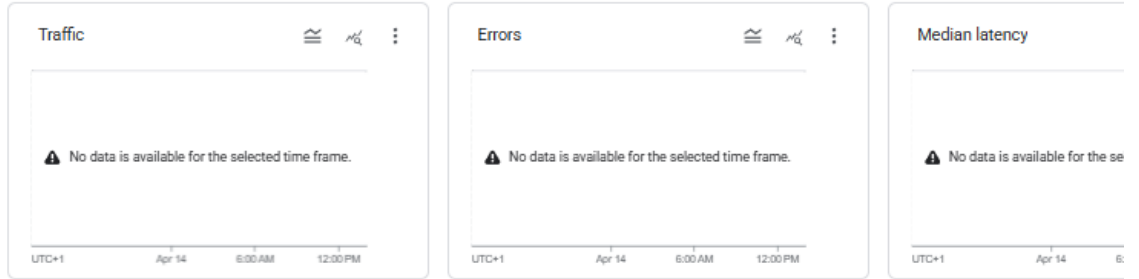
Google requires a payment card to be able to use the Google API features. However, they do have a \$200 free usage every month, and the NCM usage should not come close to hitting any charge thresholds.

If any payment details are incorrect or if the billing information has expired, the API will not work until updated

Repeat the same steps for the other API's in the above list

Once you've added the API's you will see them in the list of API's & Services from the Enabled API's & services window

- Enabled APIs & services
- Library
- Credentials
- OAuth consent screen
- Page usage agreements



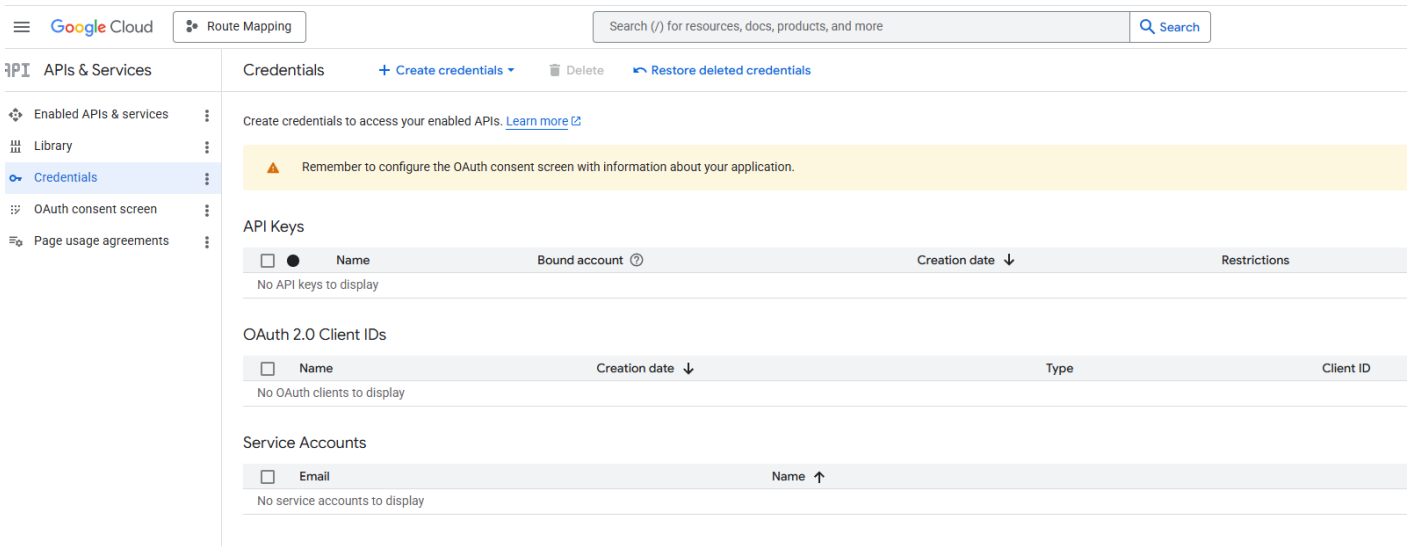
Filter Filter

Name	Requests	Errors (%)	Latency, median (ms)	Latency, 95% (ms)
Analytics Hub API				
BigQuery API				
BigQuery Connection API				
BigQuery Data Policy API				
BigQuery Data Transfer API				
BigQuery Migration API				
BigQuery Reservation API				
BigQuery Storage API				
Cloud Dataplex API				
Cloud Datastore API				
Cloud Logging API				
Cloud Monitoring API				
Cloud SQL				
Cloud Storage				
Cloud Storage API				
Cloud Trace API				
Dataform API				
Directions API				
Geocoding API				
Google Cloud APIs				
Google Cloud Storage JSON API				
Maps JavaScript API				
Maps Static API				
Service Management API				
Service Usage API				
Telemetry API				

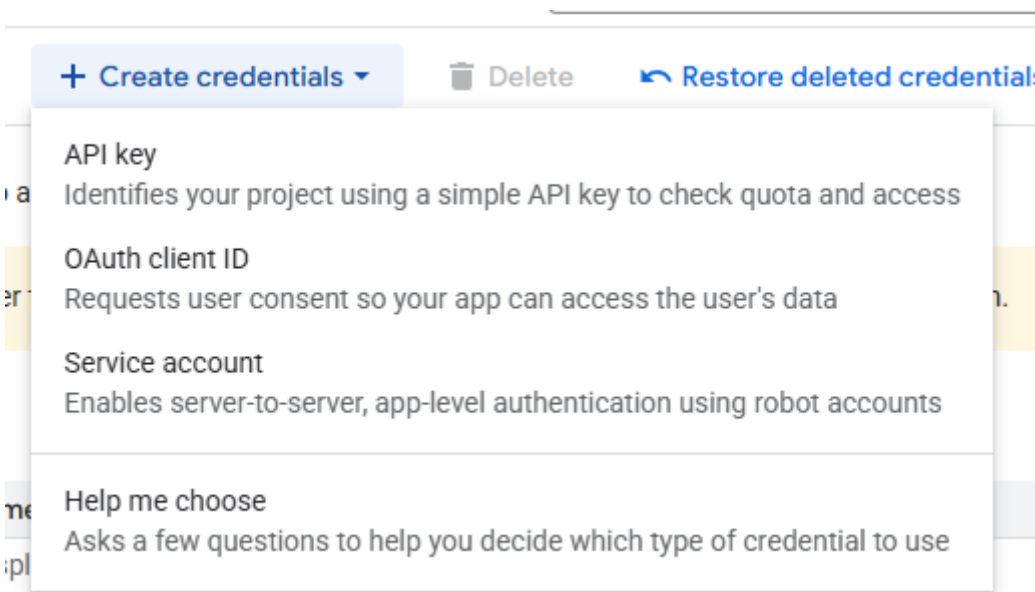
Creating Google API Key

Now you have all the API's required on your account, you need to create an API key that links.

To do this, from the API's & Services page, click on the Credentials button at the left of the screen and then press + Create credentials at the top of the window



In the dropdown, select API Key



This will then open a side window where you can name the API key and select which API's you want in your key.

Give the API an appropriate name e.g. Google API Key and in the Select API dropdown, tick all 4 API's you added previously:

- Maps Static API
- Directions API
- Maps JavaScript API
- Geocoding API

So the API Key looks like:

Name *

Google API Key

Use a unique name to identify your API key

APIs that can be accessed using this key ?

- i** To use Vertex or Gemini APIs with an API key, you must bind it to a service account by selecting 'Authenticate API calls through a service account' before applying the API restriction.

Note: An [organization policy](#) governs creating API keys bound to a service account for projects with a Google Cloud organization. [Learn more](#) ↗

Select API restrictions *

4 APIs ▼

This list includes only APIs enabled in this project. If you don't see the API you need, visit the [API Library](#) to enable it.

Selected APIs:

Maps JavaScript API

Maps Static API

Directions API

Geocoding API

 Authenticate API calls through a service account

API calls made by this key will authenticate as the bound service account. This option is required to access some APIs such as Vertex AI.

Restrict your key to reduce security risks

Select a specific application type to restrict access

Application restrictions ?

- None
- Websites
- IP addresses
- Android apps
- iOS apps

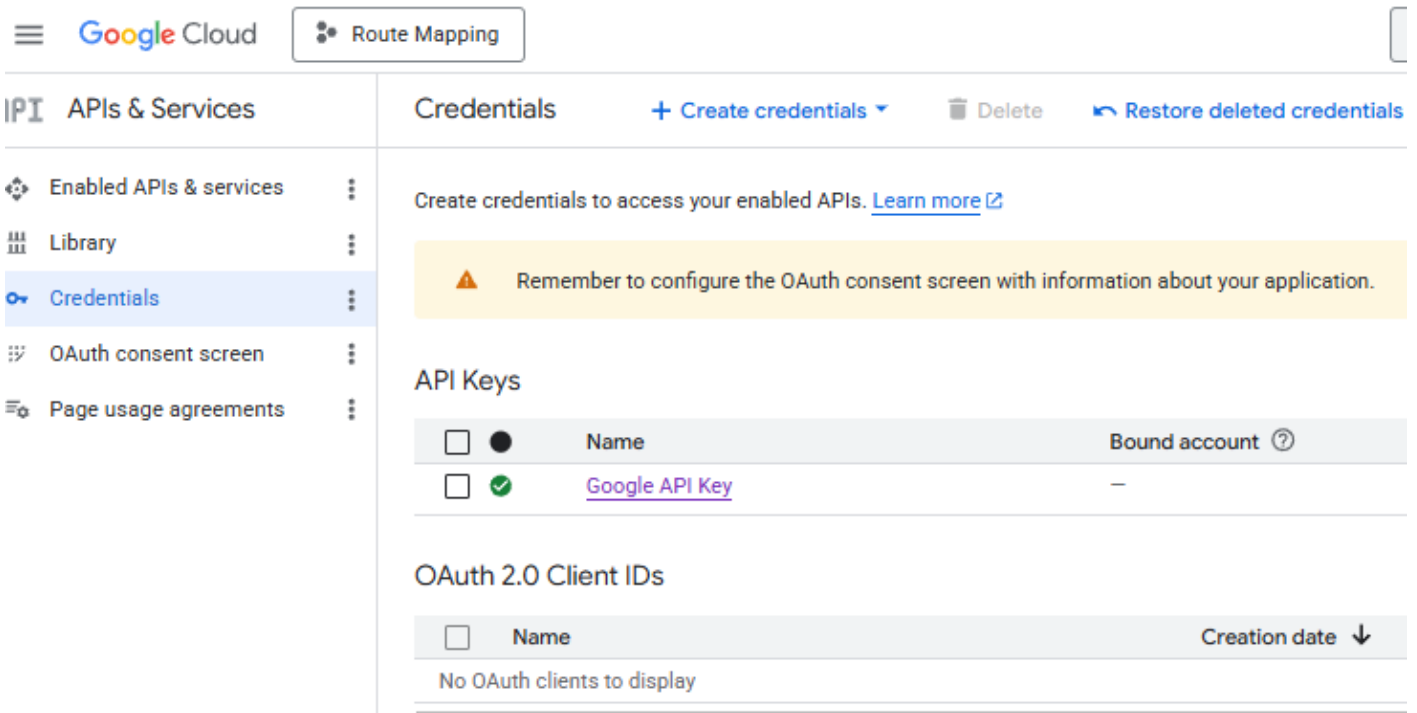
Create

Cancel

Once this is done, click create, the side window will update and show you your API key.

Please take a copy of this as it will be required later

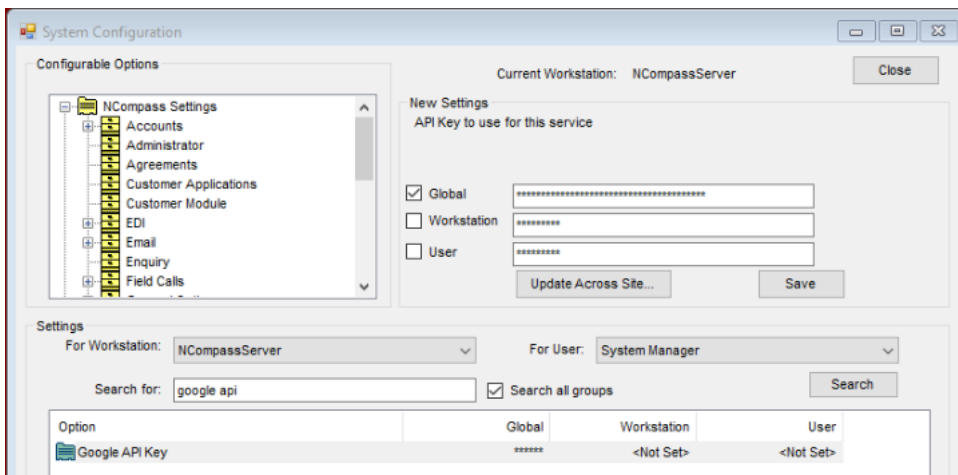
If you ever need to get a copy again, in the Credentials window where we went first to start creating the API key, you will now see your Google API Key in the list



You can click on this link to make any required changes or to see the key again

Adding Google API Key to NCompass

Go to NCompass. You will need to be logged in with administrator access. Click on Tools > Configuration, and then search for 'Google API' (ticking the search all groups box). Tick the Global box and paste in the Google API Key. Press Save.



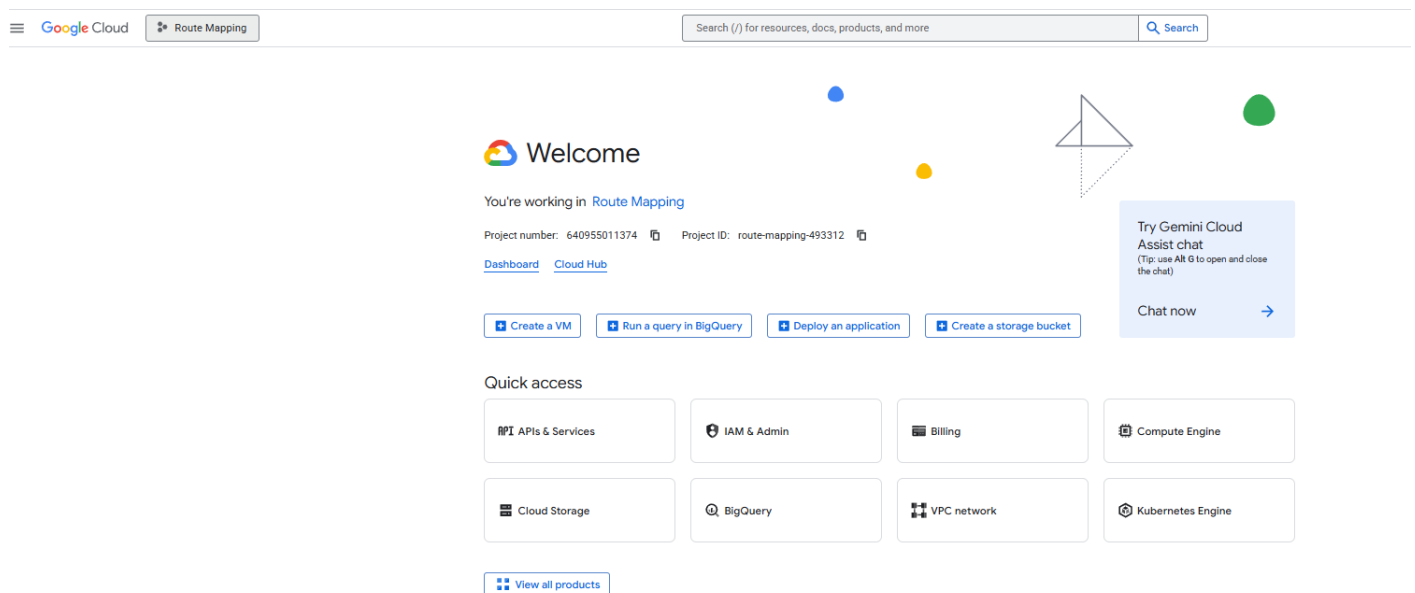
Adding Billing Details

If you didn't add billing details before or if your billing details expire, they need to be added / updated

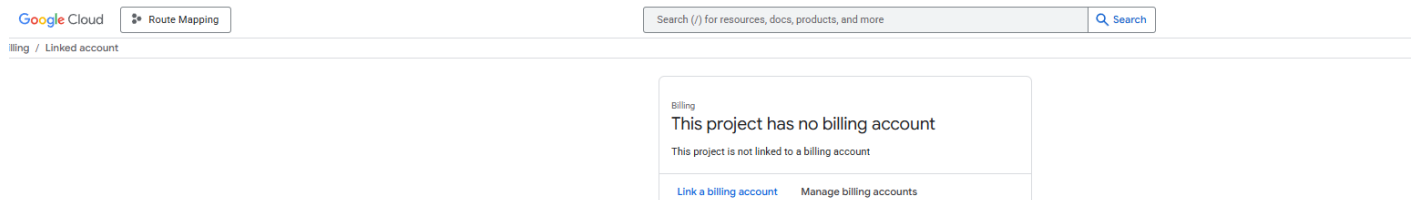
To do this, go to: <https://console.cloud.google.com/>

As mentioned above, if any payment details are incorrect or if the billing information has expired, the API will not work until updated

It will likely auto select your route mapping product but if you have multiple, make sure you select the project you created at the start of the guide



From this Welcome window, click billing and you can select link billing account if not created or Manage billing accounts if renewing card details. From here, fill in or update details as required



Created 2026-04-14 12:25:23 UTC by Harrison Heron
Updated 2026-04-16 16:19:39 UTC by Harrison Heron