

# DrayTek SmartVPN for Remote Dial-In Users

You are able to utilise a remote dial-in user to connect yourself to a remote network. Doing so allows you to work as if you were at that site in most cases.



Calculus support and offer this service where the routers are leased from us, simply send a request to the [support team](#).

## Installing the App

Download the [SmartVPN Client](#) from the DrayTek website for your platform.

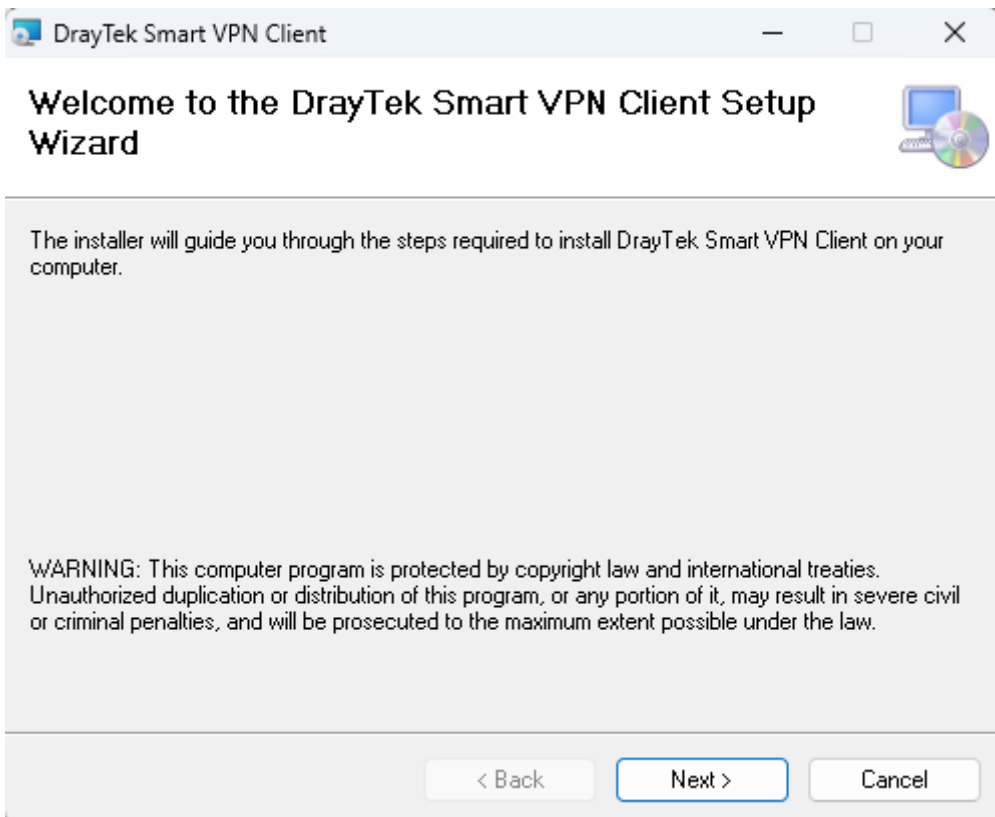
Calculus can only provide support for Windows applications, but others do work. This guide covers Windows setup only.

Once you have downloaded the zip file, extract it to your desired location. You'll be presented with 2 files:

 SmartVPNClient_5.7.1	15/09/2025 16:32	Application
 SmartVPNClient_5.7.1	15/09/2025 16:32	Windows Installer Package

Run (by double-clicking) the `SmartVPNClient_X.X.X.msi` where `X.X.X` is the downloaded version. The file is a *Windows Installer Package* and is highlighted above. You will need administrative rights to install this.

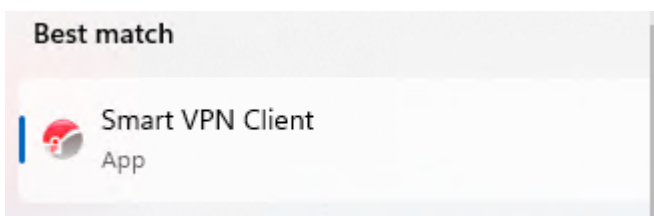
You will be presented with the following screen, press `Next`.



This will install the app, once completed press the `Close` button.

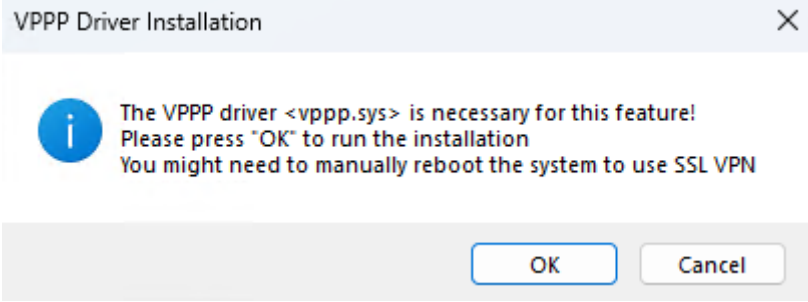
## Running the App

You'll find a `Smart VPN Client` in your start menu, click to open and run.



## First Run

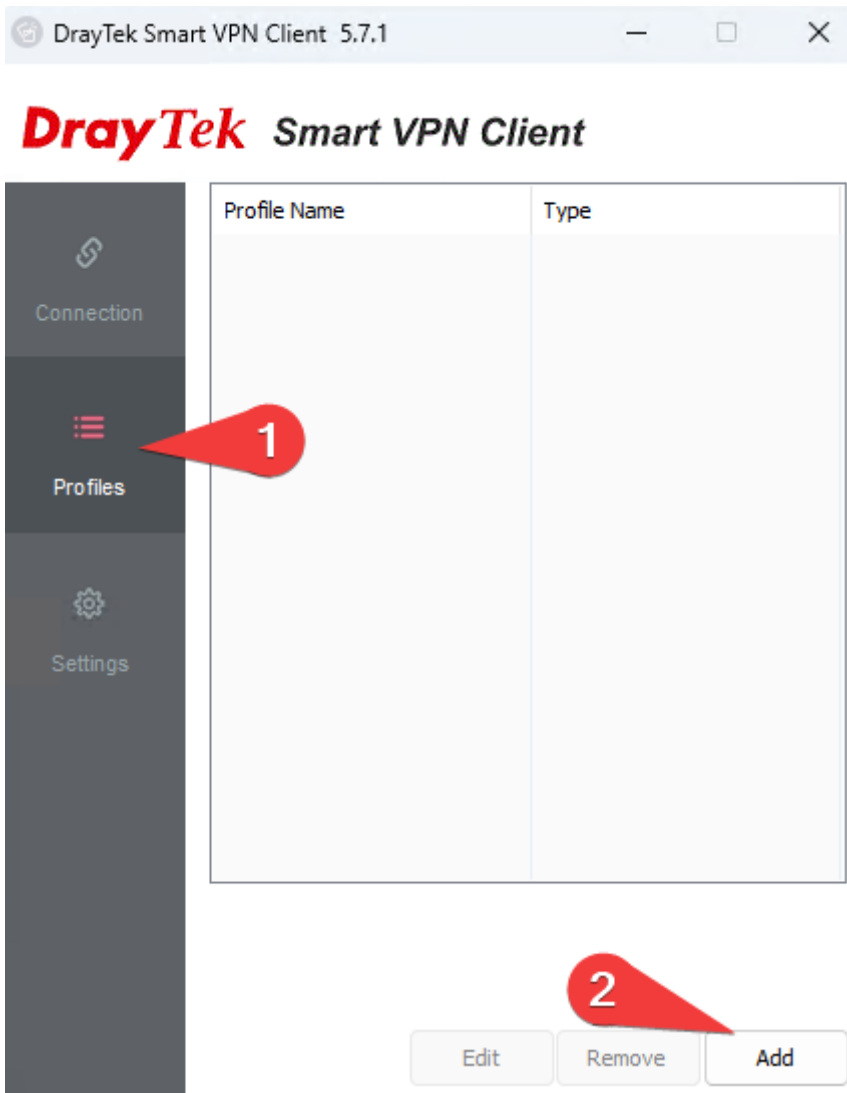
The first time you run the application, you may be prompted to install the VPPP driver "`vppp.sys`" - press `OK` to install, it is a required feature for some VPN types.



## Configuring a VPN Profile

You can have multiple VPN profiles, but may only be connected to one at once.

Select **Profiles** on the left-hand side, and press the **Add** button.



Enter a sensible profile name, this is purely what you will select to connect to.

The details below are for our most commonly used VPN types. If you need another type, details will be provided to you as required.

### Server Information

These details will be provided to you by the support team. Select the relevant type. Typically, SSL VPN or IPSec VPN types are what is used.

### VPN Information

These details will also be provided to you by the support team, enter them in the relevant fields. If using mOTP and SSL, the token and PIN will be provided to you.

You may opt to remember your credentials here, which will mean you do not have to enter them every time. Make sure you turn off `Always Prompt for Credentials` if you do.

### IP Property

Only make changes in here if expressly instructed.

### Advanced Options

Only make changes in here if expressly instructed.

The screenshot shows the 'Edit Profile' dialog box with the following fields and options:

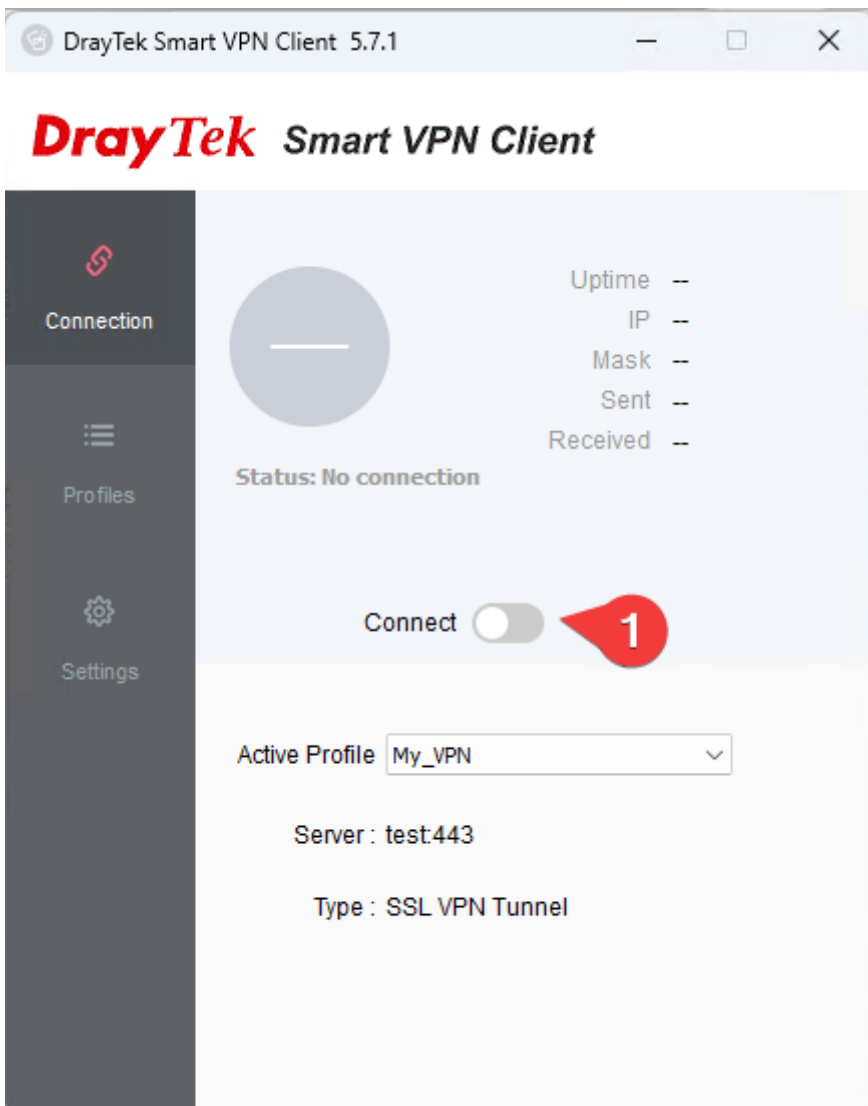
- Profile Name:** My VPN
- Server Information:**
  - Type:** SSL VPN Tunnel
  - IP or Hostname:** Enter IP address or Hostname : 443
  - Port Knocking:**
- VPN Information:**
  - Authentication Type:** Username and Password
  - User Name:** Max: 128 characters
  - Password:** Max: 128 characters
  - Remember My Credentials:**
  - Always Prompt for Credentials:**

At the bottom, there are expandable sections for `IP Property` and `Advanced Options`, and `OK` and `Cancel` buttons.

## Connecting to the VPN

Once your profile is setup, you can then connect to it.

On the connect tab, ensure your `Active Profile` is selected in the dropdown, and toggle the `Connect` button.



If this errors at all, please ensure you provide the support team with the error for diagnosing the issue.

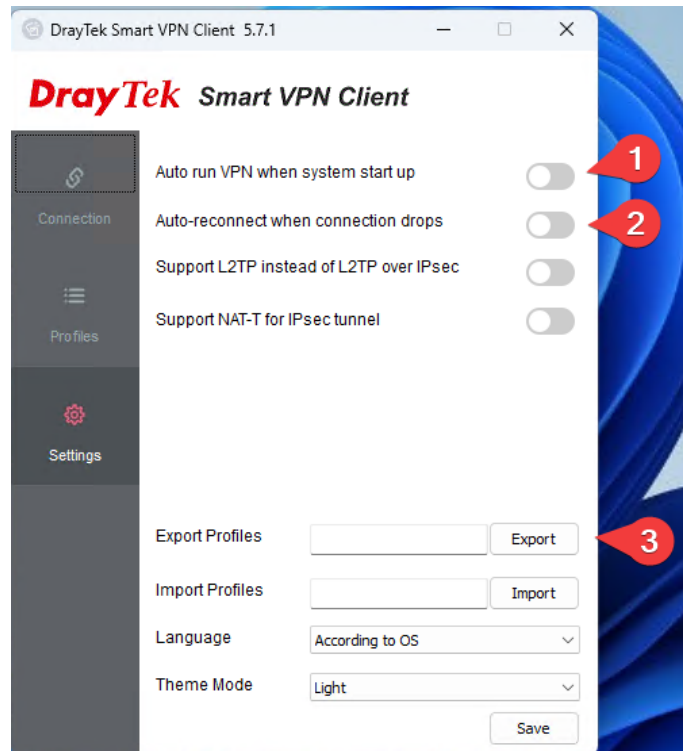
## Other Useful Settings

These can only be changed when you do not have a VPN connected.

1. Enable this option to have the Smart VPN Client start with your system.

2. Enable this option to have the Smart VPN Client attempt to reconnect in the event your VPN loses connection at all.

3. Press **Export** to save your profiles for importing elsewhere. This may be useful for when you are moving to a new PC for example. Note that the credentials will require inputting again, they are not transferred for security reasons.



Created 2025-09-15 15:18:15 UTC by Sam Newsome  
Updated 2025-09-15 16:06:28 UTC by Sam Newsome